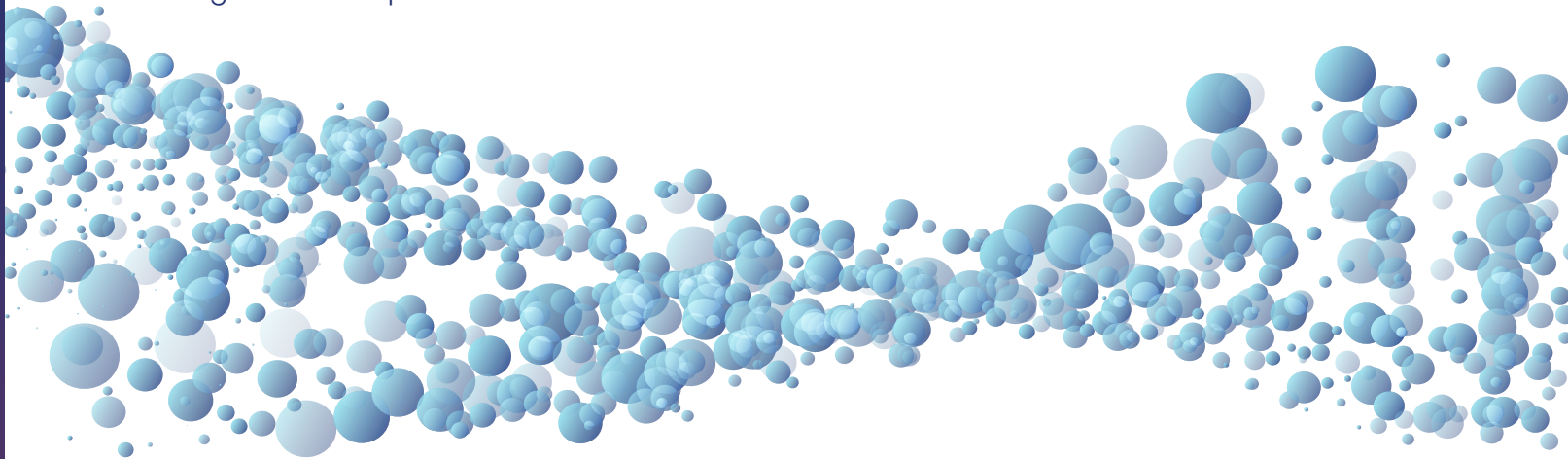


# CRYOSTORE Freezing Bags



The OriGen Biomedical® **CRYOSTORE** bag is intended for freezing blood components.



*The industry-preferred freezing bag that has the built-in ease of use, durability, and quality that you need.*

## EASE OF USE – BUILT-IN

The donor tube is intentionally placed in the corner of the bag for easier debubbling and sealing. OriGen can provide the bag with one of several stock or special order tube sets to fit your processing needs. Where indicated, tubing sets are SCD weldable, allowing for versatile applications. You can order multi-bag sets to reduce processing time and the possibility of contamination in the lab.

## NEEDLE-FREE INJECTION PORT

The “N” tubing set has luer-actuated needle-free injection ports. These swabable ports maintain sterility of the sample through numerous actuations (white paper available) and can eliminate the possibility of needle sticks.

## ALIQUOTS – MATCHED BAG AND TUBE PRINTING

All non-special order bags have a printed number on the label pocket and a donor tube with pre-marked printed segments of approximately 100µL. This can aid in tracing aliquot samples to the bag.

## DURABILITY – BETTER MATERIAL, PROVEN PERFORMANCE

The OriGen Biomedical **CRYOSTORE** Bag is the industry-preferred cryogenic freezing bag. The hermetically sealed spike ports and film used in every **CRYOSTORE** bag are made from a robust EVA.

## OUR QUALITY STANDARDS

A Certificate of Conformance (CoC) is included with each **CRYOSTORE** bag. OriGen Biomedical **CRYOSTORE** bags are CE marked and FDA 510(k) cleared. OriGen is certified to ISO 13485:2016, MDSAP certified, and all products are manufactured to GMP guidelines.

## ORDERING INFORMATION

To place an online order, please fill out [this form](#).



## TECHNICAL INFORMATION

PART CODE	WIDTH (cm*)	LENGTH (cm*)	FREEZE VOLUME MIN-MAX, ML
CS50	7.6	14.7	10-30
CS250	12.7	17.7	30-70
CS500	12.7	22.8	55-100
CS750	12.7	25.7	80-190
CS1000	15.0	28.5	120-275
CS2000	23.0	34.0	180-450

\*Length and width are overall bag footprint.

7000 Burlson Rd, Bldg D | Austin, Texas 78744 | 512.474.7278 | Toll Free 800.233.9014 | [sales.us@origen.com](mailto:sales.us@origen.com) | [origen.com](http://origen.com)

CE Marked | FDA Cleared | ISO 13485 Certified | MDSAP Certified | Manufactured to GMP Guidelines

PART CODE	TUBE SET DESCRIPTION	PACKAGING	OVERWRAP	DOUBLE POUCHED	CASE QUANTITY	SPECIAL ORDER
<b>CRYOSTORE 28 EVA FREEZING BAG, 10-25ML</b>						
CS28V	"V" Tubing Set - Female luer with injection Y to two CS28 bags with pinch clamps	Pouch of 4			24	✓
<b>CRYOSTORE 50 EVA FREEZING BAG, 10-30ML</b>						
CS50	"Standard" Tube Set - Two female luers with caps	Pouch of 4			24	
CS50M3	"M3" Tube Set - One male luer with cap, two female luers with caps, a needle-free injection port and a pinch clamp	Pouch of 4			24	✓
CS50N	"N" Tube Set - One male luer with cap, two female luers with caps, and a needle-free injection port	Pouch of 4			24	
CS50NS	"N" Tube Set - One male luer with cap, two female luers with caps, and a needle-free injection port	Pouch of 1		✓	12	
CS50S	"Standard" Tube Set - Two female luers with caps	Pouch of 1		✓	12	
CS50V7	Multiple bag set, ten 50 EVA freezing bags, and one 750 EVA freezing bag, "V7" Tube Set - Female luers with caps, "Y" connectors, pinch clamps, slide clamps, co-extruded EVA/PVC tubing and a 30 cm PVC tube	Pouch of 1 Set			2 Sets	✓
<b>CRYOSTORE 250 EVA FREEZING BAG, 30-70ML</b>						
CS250	"Standard" Tube Set - Two female luers with caps	Pouch of 4			24	
CS250N	"N" Tube Set - One male luer with cap, two female luers with caps, and a needle-free injection port	Pouch of 4			24	
CS250NS	"N" Tube Set - One male luer with cap, two female luers with caps, and a needle-free injection port	Pouch of 1		✓	12	

The OriGen Biomedical® CryoStore bag is indicated for freezing blood components. Carefully read Instructions for Use before using this product. Sterile, single use only, made in the USA.

PART CODE	TUBE SET DESCRIPTION	PACKAGING	OVERWRAP	DOUBLE POUCHED	CASE QUANTITY	SPECIAL ORDER
<b>CRYOSTORE 250 EVA FREEZING BAG, 30-70ML</b>						
CS250NSW	"N" Tube Set - One male luer with cap, two female luers with caps, and a needle-free injection port	Pouch of 1	✓	✓	12	
CS250S	"Standard" Tube Set - Two female luers with caps, one bag	Pouch of 1		✓	12	✓
<b>CRYOSTORE 500 EVA FREEZING BAG, 55-100ML</b>						
CS500	"Standard" Tube Set - Two female luers with caps	Pouch of 4			24	
CS500i3	Custom length 7.5 inches, "Standard" Tubing Set - Two female luers with roller clamps	Pouch of 4			24	
CS500N	"N" Tube Set - One male luer with cap, two female luers with caps, and a needle-free injection port	Pouch of 4			24	
CS500NS	"N" Tube Set - One male luer with cap, two female luers with caps, and a needle-free injection port	Pouch of 1		✓	12	
CS500NSW	"N" Tube Set - One male luer with cap, two female luers with caps, and a needle-free injection port	Pouch of 1	✓	✓	12	
CS500V2	Custom 2-Bag set with spikes, "V2" Tube Set - One nylon spike with cover, one male luer with cap, a needle-free injection port and pinch clamps, 2 sets per pouch	Pouch of 2			12	✓
<b>CRYOSTORE 750 EVA FREEZING BAG, 80-190ML</b>						
CS750	"Standard" Tube Set - Two female luers with caps	Pouch of 4			24	
CS750N	"N" Tube Set - One male luer with cap, two female luers with caps, and a needle-free injection port	Pouch of 4			24	

The OriGen Biomedical® CryoStore bag is indicated for freezing blood components. Carefully read Instructions for Use before using this product. Sterile, single use only, made in the USA.

PART CODE	TUBE SET DESCRIPTION	PACKAGING	OVERWRAP	DOUBLE POUCHED	CASE QUANTITY	SPECIAL ORDER
<b>CRYOSTORE 750 EVA FREEZING BAG, 80-190ML</b>						
CS750NS	"N" Tube Set - One male luer with cap, two female luers with caps, and a needle-free injection port	Pouch of 1		✓	12	
CS750NSW	"N" Tube Set - One male luer with cap, two female luers with caps, and a needle-free injection port	Pouch of 1	✓	✓	12	
<b>CRYOSTORE 1000 EVA FREEZING BAG, 120-275ML</b>						
CS1000N	"N" Tube Set - One male luer with cap, two female luers with caps, and a needle-free injection port with roller clamps	Pouch of 4			24	
<b>CRYOSTORE 2000 EVA FREEZING BAG, 180-450ML</b>						
CS2000N	"N" Tube Set - One male luer with cap, two female luers with caps, and a needle-free injection port	Pouch of 4			24	
CS2000NS	"N" Tube Set One male luer with cap, two female luers with caps, and a needle-free injection port	Pouch of 1		✓	12	✓

The OriGen Biomedical® CryoStore bag is indicated for freezing blood components. Carefully read Instructions for Use before using this product. Sterile, single use only, made in the USA.

ML09[10]: 2023-4 © 2023 OriGen Biomedical. All rights reserved. OriGen Biomedical® is a registered trademark of OriGen Biomedical, Inc

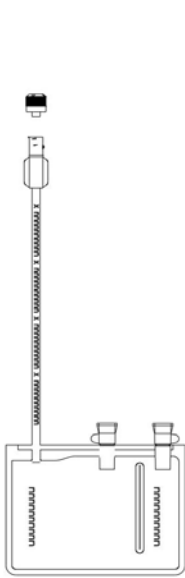


# CRYOSTORE Freezing Bags

The OriGen Biomedical® **CRYOSTORE** bag is intended for freezing blood components.



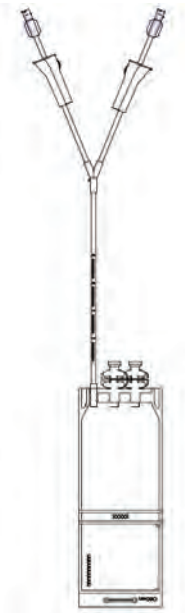
## EXAMPLE DRAWINGS OF CRYOSTORE BAGS AND TUBE SETS



CS25F



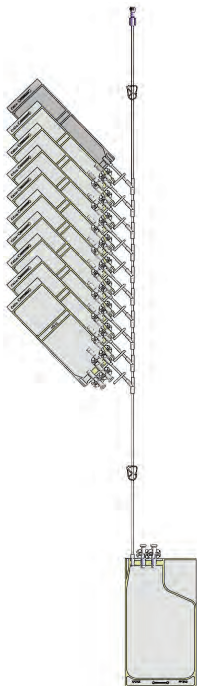
CS28V



CS50



CS50M3



CS50V7



CS50N



CS250N



CS250

The OriGen Biomedical® CryoStore bag is indicated for freezing blood components. Carefully read Instructions for Use before using this product. Sterile, single-use only, made in the USA.

ML60.R01: 2023-05



# CRYOSTORE Freezing Bags

The OriGen Biomedical® **CRYOSTORE** bag is intended for freezing blood components.



## EXAMPLE DRAWINGS OF CRYOSTORE BAGS AND TUBE SETS



CS500



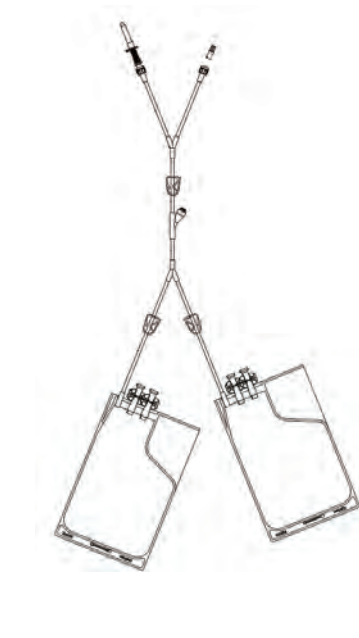
CS500N



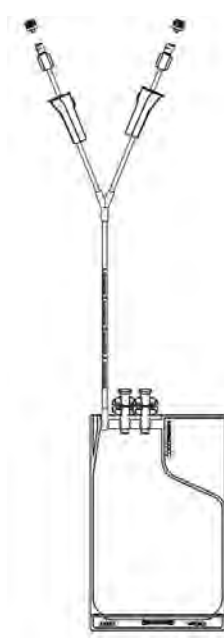
CS1000N



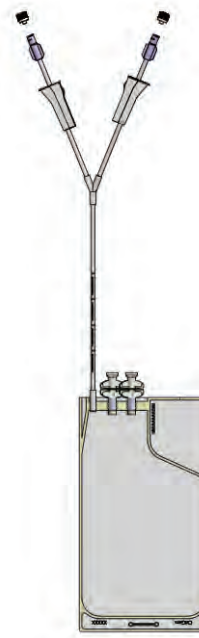
CS2000N



CS500V2



CS500i3



CS750



CS750N

The OriGen Biomedical® CryoStore bag is indicated for freezing blood components. Carefully read Instructions for Use before using this product. Sterile, single-use only, made in the USA.

ML60.R01: 2023-05

